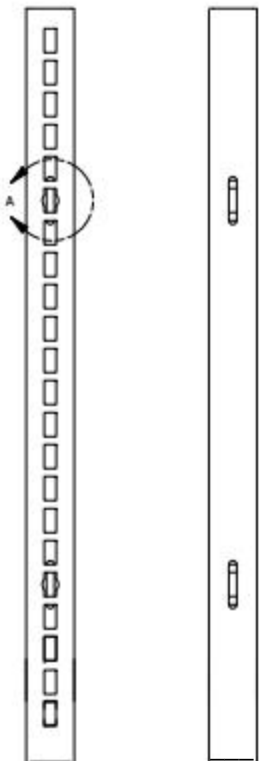


RXWMU INSTALLATION INSTRUCTIONS

RX WALL MOUNT UPRIGHTS



Anchor holes are spaced 6" from each end. Additional anchor holes are 12" apart along the length of the upright. See detail A. 1-1/2" slots on the back side allow for adjustment when installing fasteners (not included).



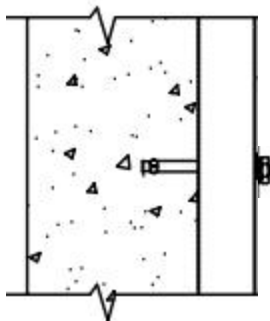
The purchaser is responsible for determining the suitability of any wall or structure to which the uprights are to be anchored. Rx Shelving makes no determination that the wall or structure is suitable for anchoring.

Do not use nails or plastic anchors to mount the uprights! Please place an anchor and washer in every space as indicated in detail A.

Uprights should be mounted 16", 36", or 48" apart center to center for use with our RXHR model hang rods. Tops of the uprights must be level with each other. Suitable fasteners and mounting options are below.

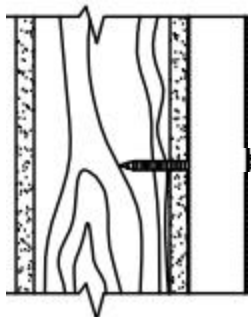
MOUNTING RXWMU DIRECTLY TO WALL

CONCRETE



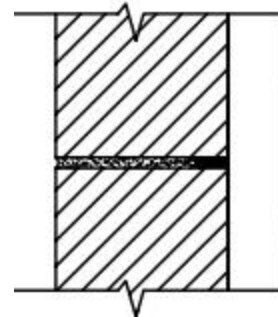
WEDGE ANCHOR & WASHER
1/4" X 3-1/4" - 1-1/4" EMBEDMENT

WOOD STUDS



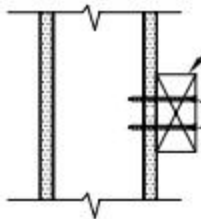
5/16" X 4" LAG SCREW & WASHER
AT EACH STUD

MASONRY



SELF-TAPPING
MASONRY SCREW & WASHER
1/4" X 3-1/4"
1-1/4" EMBEDMENT

METAL STUD WALLS



TWO #8 X 2-5/8 SELF DRILLING
DRY WALL SCREW AT EACH STUD

INSTRUCTIONS FOR 2 X 4 CONTINUOUS BLOCKING

Attach the 2 x 4's as close as possible to the uprights. Metal Stud Walls require 2 x 4 blocking and must be a minimum of 14GA.

Blocking requires the upright to be mounted to the 2 x 4 through the top slot. Our first mounting slot is 6" from the top. You will need to drill a mounting hole on back of the upright at the top slot to anchor into the 2 x 4 in the proper position.

Blocking is typically spaced 12" on center.